

Ground Fault Circuit Interrupters (GFCIs) protect **PEOPLE** from electrical shock

Arc Fault Circuit Interrupters (AFCIs) protect **PROPERTY** from electrical fires

AF/GF Receptacles and Breakers

Dual-purpose home protection

GROUND FAULTS are the most common electrical shock hazard

Electrical failure or **MALFUNCTIONS** are the 3rd leading cause of residential building fires

Self-test GFCI Receptacles

Eaton's line of self-test GFCI receptacles ensure electric shock protection with periodic automatic testing. If no GFCI protection is present, the receptacle will render itself inoperable and a red indicator light will blink notifying the user there is no power and the device must be replaced. Self-test GFCI receptacles are available in a number of styles including hospital, tamper resistant, non-tamper resistant and weather resistant, as well as a variety of colors.



Design features

- Meets and exceeds 10 kA short circuit testing and Underwriters Laboratories (UL) UL943 safety standards
- Performs periodic self-tests to ensure integrity of GFCI protection
- Line-load mis-wiring protection: GFCIs will not provide power downstream when wired incorrectly
- When downstream receptacles are wired from load side, a 20A feed-through rating offers full protection
- Automatic grounding system eliminates the need for bonding jumper in grounded metal enclosure; provides redundant measure of ground continuity when jumper is used
- Tri-combo head terminal and mounting screws

Self-test GFCI duplex receptacles

Catalog no.	Description	Amps	Volts	Color Suffix
□ SGF15	Self-test GFCI duplex receptacle	15	125	A, B, BK, GY, LA, V, W
□ SGF20	Self-test GFCI duplex receptacle	20	125	A, B, BK, GY, LA, RD, V, W

TR Self-test GFCI duplex receptacles

Catalog no.	Description	Amps	Volts	Color Suffix
□ TRSGF15	Tamper resistant self-test GFCI duplex receptacle	15	125	A, B, BK, GY, LA, RB, SG, V, W
□ TRSGF20	Tamper resistant self-test GFCI duplex receptacle	20	125	A, B, BK, GY, LA, RD, V, W

Color ordering information for receptacles

For ordering devices, include Cat. no. followed by the color suffix: A (Almond), B (Brown), BK (Black), GY (Gray), LA (Lt. Almond), RD (Red), RB (Oil Rubbed Bronze), SG (Silver Granite), V (Ivory), W (White)

A	B	BK	GY	LA	RD
(Almond)	(Brown)	(Black)	(Gray)	(Lt. Almond)	(Red)
RB	SG	V	W		
(Oil Rubbed Bronze)	(Silver Granite)	(Ivory)	(White)		

Compliances, specifications and availability are subject to change without notice.

AFCI Receptacles

Eaton's Outlet Branch Circuit (OBC) AFCI receptacles provide protection against unseen arc faults that can result in electrical fires. Eaton's arc fault technology reduces unwanted tripping due to inference from devices or appliances. With a 20A feed-through rating, arc fault protection extends to all down-stream devices and electrical cords when installed properly. Terminal screws are backed out and ready to wire. The durable impact-resistant thermoplastic face and back body are virtually unbreakable.



Design features

- Protects against arc faults in wiring resulting from damaged insulation and other causes that can lead to electrical fires
- Meets and exceeds Short Circuit Testing and Underwriters Laboratories UL 1699A and UL498 Safety standards
- OBC AFCI receptacles protect from series and parallel arcs downstream
- OBC AFCI receptacles also provide protection from upstream series arcs
- When downstream receptacles are wired from load side, a 20 amp feed-through rating offers full protection
- Tri-combo head terminal and mounting screws

AFCI duplex receptacles

Catalog no.	Description	Amps	Volts	Color Suffix
□ TRAFCI15	Tamper resistant OBC AFCI duplex receptacle	15	125	A, B, BK, GY, LA, V, W
□ TRAFCI20	Tamper resistant OBC AFCI duplex receptacle	20	125	A, B, BK, GY, LA, V, W

Color ordering information for receptacles

For ordering devices, include Cat. no. followed by the color suffix: A (Almond), B (Brown), BK (Black), GY (Gray), LA (Lt. Almond), V (Ivory), W (White)

A	B	BK	GY	LA
(Almond)	(Brown)	(Black)	(Gray)	(Lt. Almond)
V	W			
(Ivory)	(White)			

Compliances, specifications and availability are subject to change without notice.

Eaton's combined **AFCI/GFCI technology** provides fire and electrical safety in one device. Available in both receptacles and breakers. The fast-acting design shuts off power in the event of an **arc-fault** or **ground-fault**, potentially saving lives and protecting property. As the only manufacturer to offer this technology in a receptacle and a breaker, Eaton has a **solution** to get you code compliant no matter the project.

AF/GF Receptacles

Design features

- Provides both arc fault protection per UL 1699A and ground fault protection per UL943 in one convenient device
- Meets and exceeds 10kA short circuit testing and Underwriters Laboratories (UL) UL943 safety standards
- When downstream receptacles are wired from load side, a 20A feed-through rating offers full protection
- Multiple trip indicators make it easy to diagnose arc and ground faults
- Lock-out functionality prevents miswired line-load connections and GFCI/AFCI circuitry damage
- Protects from both series and parallel arcs downstream from the OBC AF/GF receptacle
- OBC AF/GF receptacles also protect from upstream series arcs
- Device self-tests periodically to ensure proper function of both the ground fault and arc fault protection elements

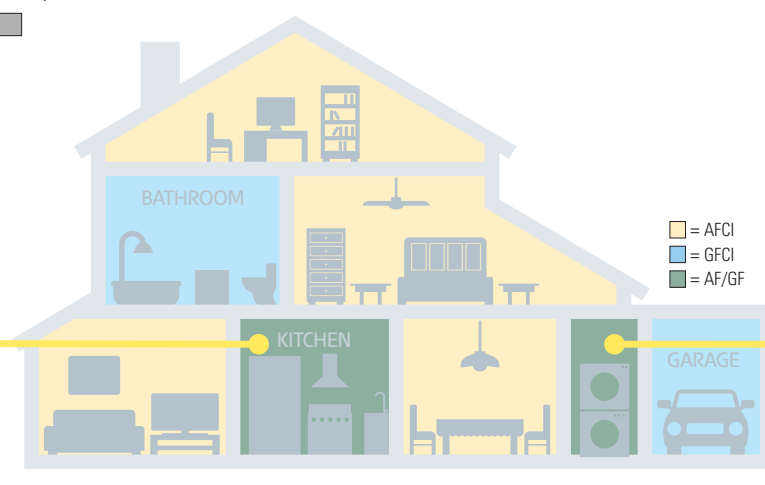
AF/GF duplex receptacles

Catalog no.	Description	A	V/AC	NEMA	Color suffix
□ TRAFGF15	Tamper resistant AF/GF duplex receptacle with standard-size wallplate, back & side wire	15	125	5-15R	A, B, BK, GY, LA, V, W
□ TRAFGF20	Tamper resistant AF/GF duplex receptacle with standard-size wallplate, back & side wire	20	125	5-20R	A, B, BK, GY, LA, V, W

Color ordering information for receptacles

For ordering devices, include Cat. no. followed by the color suffix: A (Almond), B (Brown), BK (Black), GY (Gray), LA (Lt. Almond), V (Ivory), W (White)

A	B	BK	GY
(Almond)	(Brown)	(Black)	(Gray)
LA	V	W	
(Lt. Almond)	(Ivory)	(White)	



Compliances, specifications and availability are subject to change without notice.

AF/GF Breakers

Design features

- Provides one device for both AFCI and GFCI protection, allowing for a single point of reset
- Offers complete protection from arc and ground faults for the entire circuit, including home-runs
- Enables a lower installed cost versus other code-approved alternatives by using only one device to achieve both AFCI and GFCI protection
- The 15A & 20A breakers can be used for heating, air conditioning and refrigeration equipment applications
- Six distinct trip codes make it easy to diagnose cause of trip

Type BR (1") AF/GF breakers

Catalog no.	Description	Amps	Poles	kAIC
□ BRLAFGF115	Standard - Pigtail	15	1	10
□ BRLAFGF120	Standard - Pigtail	20	1	10

Type CH (3/4") AF/GF breakers

Catalog no.	Description	Amps	Poles	kAIC
□ CHFAGGF115	Standard - Pigtail	15	1	10
□ CHFAGGF120	Standard - Pigtail	20	1	10
□ CHFAGGF115PN	Plug-On Neutral	15	1	10
□ CHFAGGF120PN	Plug-On Neutral	20	1	10

GFCI Breakers

Eaton's GFCI Breakers provide superior safety over a standard receptacle in areas where electricity may come into contact with water. Ground Fault Circuit Interrupters (GFCIs) are required in any application near water such as kitchen countertops, bathrooms, swimming pools, hot tubs and outdoor receptacles. They immediately break the circuit when electrical current leakage is being detected, reducing the risk of shock and electrocution.



Design features

- Plug-on neutral design feature (CH only)
- Time savings up to 25% per GFCI installation
- Eliminates nuisance tripping due to loose pigtail connections
- More gutter space and easier troubleshooting
- Industry exclusive "Trip to OFF" feature clearly identifies which breaker has tripped and allows for simple 1-step reset
- All Type CH products are backed by a limited lifetime warranty

Type BR (1") GFCI

Catalog no.	Description	Amps	Poles	kAIC
□ GFTCB115	Standard - Pigtail	15	1	10
□ GFTCB120	Standard - Pigtail	20	1	10

Type CH (3/4") GFCI

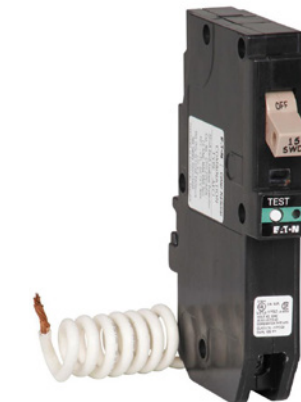
Catalog no.	Description	Amps	Poles	kAIC
□ CHFGFT115	Pigtail GFCI	15	1	10
□ CHFGFT120	Pigtail GFCI	20	1	10
□ CHFGFT115PN	Plug-on Neutral GFCI	15	1	10
□ CHFGFT120PN	Plug-on Neutral GFCI	20	1	10

GFCI breakers are available in 1- or 2-pole configurations. For more information, please refer to PUB#CA08100002E

Compliances, specifications and availability are subject to change without notice.

AFCI Breakers

Eaton's Arc Fault Circuit Interrupters (AFCIs) use advanced electronic technology to reduce fire hazards in electrical circuits. Arcing faults, a common cause of many home electrical fires, can occur when insulation around cords, wires or cables is damaged or deteriorated. They meet the requirements of the UL Standard for Safety, UL 1699 for devices that reduce the effects of persistent arcing faults that may pose a risk of fire under certain conditions. AFCIs are required in most circuits for new construction per the 2017 National Electrical Code (NEC).



Design features

- Compact footprint as standard (BR only)
- Arc fault detection methodology tolerant of non-compliant devices
- Lifetime trip code retention
- Overvoltage protection
- Six distinct LED trip codes identify reason for trip and ease troubleshooting
- Available industry-leading diagnostic LED to access most recent trip code
- Industry exclusive "Trip to OFF" feature clearly identifies which breaker has tripped and allows for simple 1-step reset (CH only)

Type BR (1") AFCI

Catalog no.	Description	Amps	Poles	kAIC
□ BRCAF115	Standard - Pigtail	15	1	10
□ BRCAF120	Standard - Pigtail	20	1	10
□ BRHCAF115	High - Interrupting - 22 kAIC	15	1	22
□ BRHCAF120	High - Interrupting - 22 kAIC	20	1	22

Type CH (3/4") AFCI

Catalog no.	Description	Amps	Poles	kAIC
□ CHCAF115	Standard - Pigtail	15	1	10
□ CHCAF120	Standard - Pigtail	20	1	10
□ CHCAF115PN	Plug-on Neutral	15	1	10
□ CHCAF120PN	Plug-on Neutral	20	1	10

AFCI breakers are available in 1- or 2-pole configurations. For more information, please refer to PUB#CA08100002E

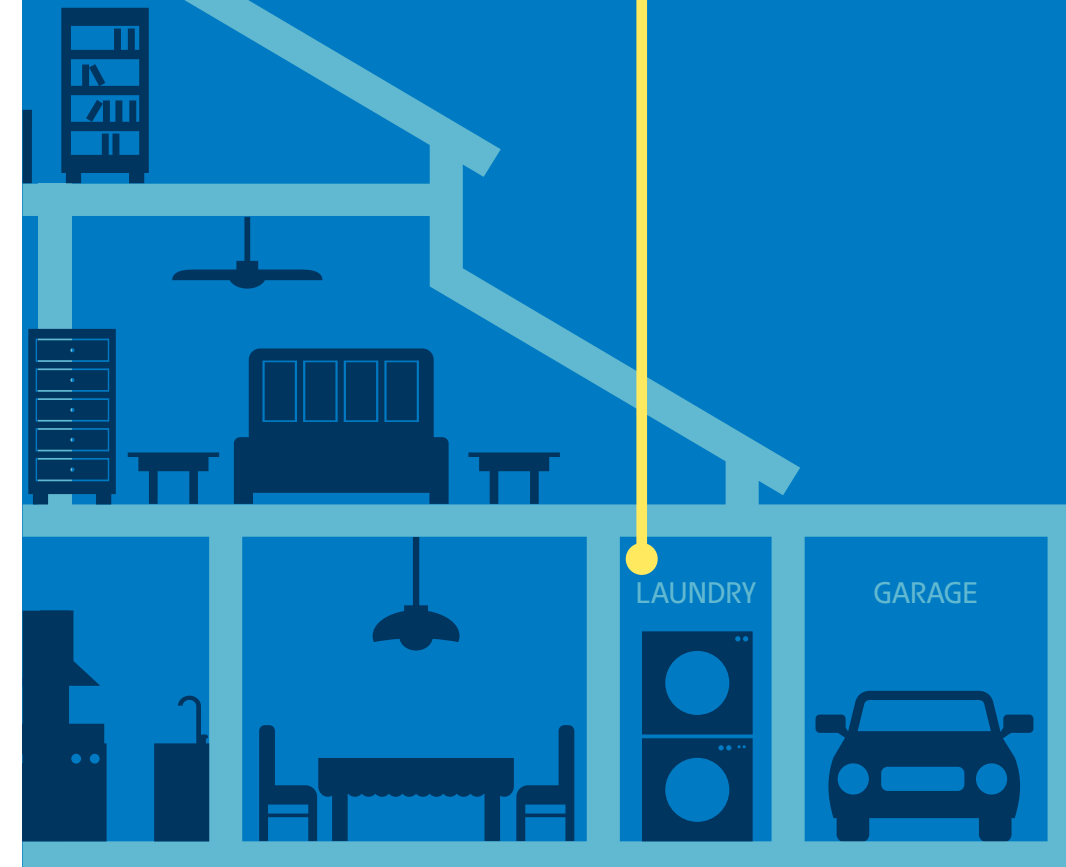
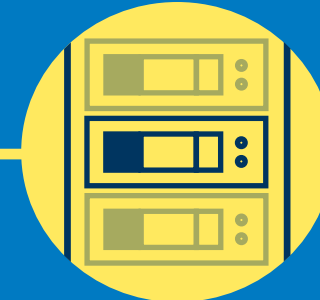
Compliances, specifications and availability are subject to change without notice.





AF/GF Breakers

The dual-purpose arc fault/ground fault (AF/GF) circuit interrupter addresses the 2017 NEC® requirement for arc fault protection in kitchens and laundry areas. Eaton's breaker offers a single, accessible point of reset, simple wiring, an LED trip code indicator for easy troubleshooting and Eaton's best-in-class arc fault protection to reduce unwanted tripping.



LAUNDRY

GARAGE

We make what matters work.*

* At Eaton, we believe that power is a fundamental part of just about everything people do. Technology, transportation, energy and infrastructure—these are things the world relies on every day. That's why Eaton is dedicated to helping our customers find new ways to manage electrical, hydraulic and mechanical power more efficiently, safely and sustainably. To improve people's lives, the communities where we live and work, and the planet our future generations depend upon. Because that's what really matters. And we're here to make sure it works.

See more at Eaton.com/whatmatters

Visit our website:
www.eaton.com/wiringdevices

Electrical Sector
203 Cooper Circle
PacifiCorp City, GA 30269
United States
Eaton.com
Eaton.com/wiringdevices

Eaton
1000 Eaton Boulevard
Cleveland, OH 44122
United States
Eaton.com

© 2017 Eaton
All Rights Reserved
Printed in USA
Publication No. BR610018EN
April 2017

Electrical Sector
Canada Operations
5925 McLaughlin Road
Mississauga, Ontario, L5R 1B8
Canada
EatonCanada.ca
Eaton.com/wiringdevices

Eaton is a registered trademark.
All other trademarks are property of their respective owners.

Electrical Sector
Mexico Operations
Carr. Tlalneguilla -
Cuautitlan Km 17.8 s/n
Col. Villa Jardin esq.
Cerrada B de Mayo
Cuautitlan, Mexico CP 54800
Mexico
Eaton.mx
Eaton.com/wiringdevices

Follow us on social media to get the latest product and support information.



Eaton's Residential & Wiring Devices
AF/GF receptacles & breakers

Arc fault & ground fault solutions

Featuring dual-purpose AF/GF receptacles & breakers



AF/GF Duplex Receptacles

Both arc fault protection and ground fault protection are required in kitchens and laundry areas according to the 2017 NEC®. Eaton's AF/GF receptacle provides protection from both arc and ground faults using Eaton's 15 years of arc fault experience to help reduce the number of unwanted nuisance trips. The receptacle incorporates self-test GFCI technology to ensure the proper operation of the protection circuitry. Eaton's AF/GF receptacle also adds the convenience of local reset, for applications where the breaker panel is difficult or inconvenient to access.



BATHROOM

KITCHEN

